

eci Insider

A PRODUCTION OF ECIGROUP

MARCH 31, 2022



Experience. Commitment. Integrity.

eciConstruction

THROWBACK

Did you know
back in 1999,
eciConstruction
built the United
States Post
Office in Enola,
Pennsylvania?



□ East Pennsboro Township

New post office going up

By Karla Browne
Sentinel Reporter

A new post office building in East Pennsboro Township is scheduled to open in October. The 5,000-square-foot standalone facility is under construction at the corner of Magaro Road and the new Center Street across from Adam Ricci Community Park.

The 15 to 16 employees at the Enola post office will move about a mile to the new building, giving up leased space at 21 N. Enola Drive.

"The existing building is tight for space. That was the driving factor," says Dale Ferguson, manager of administrative services for the Harrisburg district.

"The other big issue is parking, of course — a tough situation with the old Enola post office."

In addition to 20 customer parking spaces, Enola's new facility will offer 24-hour lobby service, which includes access to boxes and stamp vending machines.

The higher-traffic area should also be convenient for both postal customers and employees, says Postmaster Marjorie Pierce.

"We're looking forward to working in the new facility. Customers will be pleased ... especially with the parking," the postmaster says.

The postal service bought a part of the park from the township which was "split off" with the new road construction, Ferguson says.

Remodeling and replacement of post offices follow a five-year plan of capital expenditures, Ferguson says.



Construction continues last week on the new Enola post office.

Jason Minick/The Sentinel

"Enola's time was more than due," he adds.

Other area post office projects include a new building planned for Ellitsburg in Perry County and remodeling at the Mechanicsburg facility on East Simpson St.

The Mechanicsburg post office's triangular site presented parking problems which postal officials addressed by switching the orientation of the lobby and "splitting it away from the box section," Ferguson says.

Overflow parking now is available in addition to the previous parking lot and some changes were made in the driveway, he says.



The overall growth of East Pennsboro Township inspired the construction of a new post office since the previous building had limited interior space and parking that could no longer accommodate the needs of the township. The 5,000 square-foot building located at 514 Magaro Road in Enola officially opened its doors on Monday, October 25, 1999.

eciConstruction

WARRIOR RUN: MARCH 2022 PROGRESS VIDEO



<https://www.youtube.com/watch?v=KWLYXeUQvxE>

eciConstruction broke ground on this \$20.6 million project for Warrior Run School District in March 2021. The project consists of baseball/softball fields, a new football stadium slated for completion in August 2022, and a new elementary school with an estimated completion date in November 2022.

The new 99,000-square-foot K-6 Elementary School will be a three-story structure that will accommodate 700 to 850 students. The school is designed to house Kindergarten on the first level, 1st-3rd grades on the second floor, and 4th-6th grades on the third floor. The first floor includes a music suite, gymnasium/cafeteria, library, flex space, and administrative offices. The second floor features a unique learning stair adjacent to the art and STEM learning spaces as well as small group intervention rooms. Learning support and collaborative spaces are interspersed throughout each floor to enhance and support each grade level in its neighborhood of classrooms.

The athletic stadium will include artificial turf and an all-weather track that acts as a portion of the stormwater management system.



FAN INSTALLATION: KAMPEL ENTERPRISES

eciService recently installed a 29,000 cfm exhaust fan in Building 3 at Kampel Enterprises. Building 3 is where their specialized caulking is manufactured. Additional airflow was needed in the building to counteract the upcoming warm summer weather. Stanton Baker installed 200' of wire and conduit to supply power from the breaker box to the motor fan. Stanton also installed a variable frequency drive to control the speed of the fan. Joe Reneker and Jeremiah Keck installed the fan assembly, housing, and outside louver, which is opened on demand by an electronic actuator.



Tanner Trueax
Service Manager



Stanton Baker
Service Mechanic



Joe Reneker
Service Technician



Jeremiah Keck
Service Technician



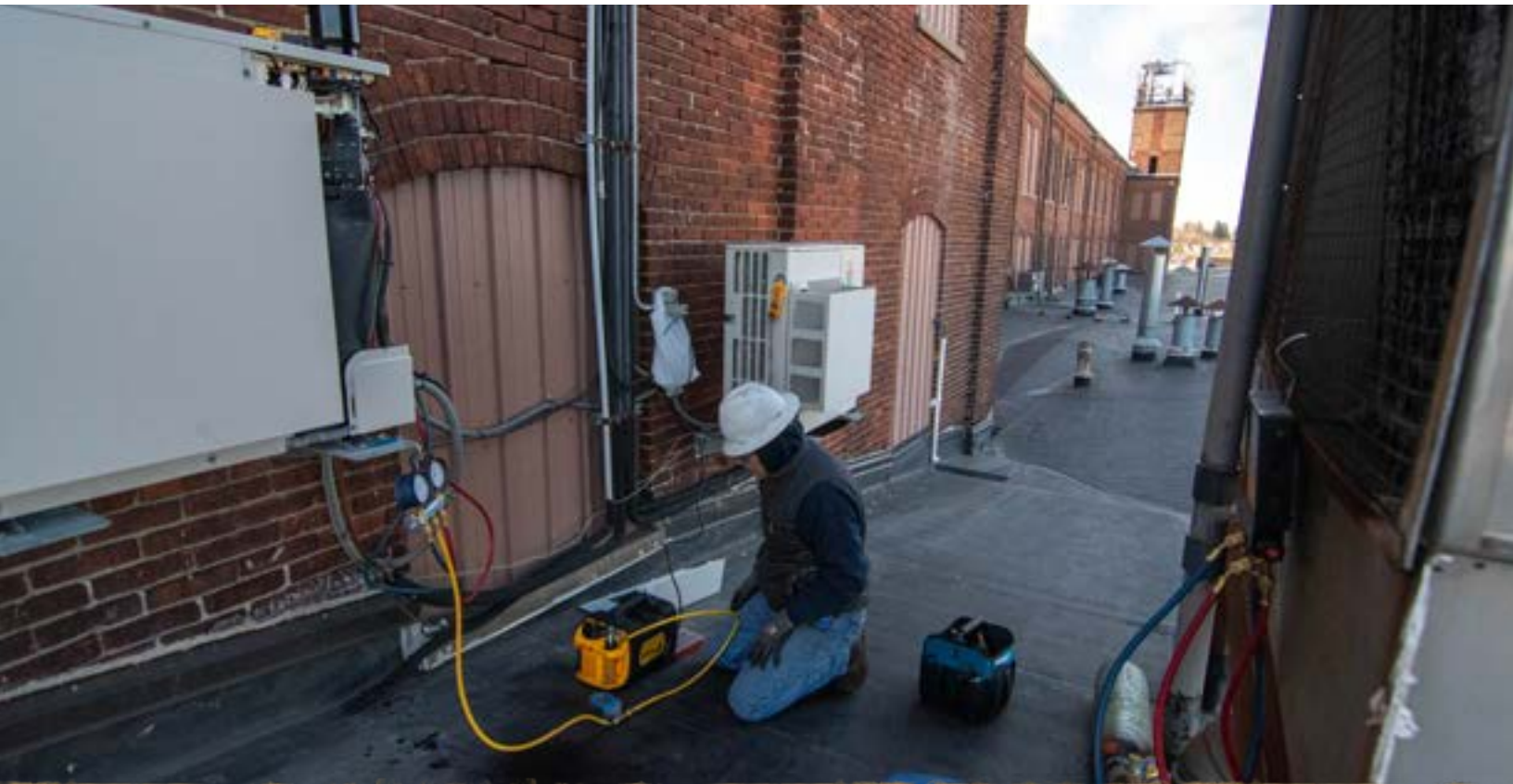
eci Wireless

YORK WALLCOVERINGS BUILDING

Ken Moore and Tyler Clopper are upgrading two three-ton mini-split HVAC units for the wireless service division. The 14-year-old three-ton mini-split units will be replaced with new, higher-efficiency units.

The shelter contains a DC plant, rectifiers, computer equipment, and network routers. The temperature coming off the equipment is 140 degrees Fahrenheit, and since the shelter has multiple computers operating, cooling is required to keep the shelter online. Even when the weather outside is freezing, HVAC equipment is still required to keep the inside of the shelter cool.

Fiber optic lines go into the shelter and coax, and the fiber in the 5G installations goes out of the shelter to the antennas. Generally, most cell sites support a set of twelve antennas distributed over three sectors, Alpha, Beta, and Gamma. This shelter runs the antennas mounted on the roof of the York Wallcoverings building, servicing Downtown York.





Like **eci** On Facebook



Like eci on Facebook for the latest news & updates

 **eci**Group

<https://www.facebook.com/eciGroupDillsburg>

 **eci**Construction

<https://www.facebook.com/eciConstruction>

 **eci**Service

<https://www.facebook.com/eciService>

 **eci**Wireless

<https://www.facebook.com/eciWireless>

 **MidState**

<https://www.facebook.com/MidStateME>

“

The greatest mistake a man can make
is to be to afraid of making one.

”

- Elbert Hubbard

SUGGESTIONS

Remember, eciGroup is always looking for ways to improve! You can head out to our website and submit your comments or suggestions in the form at:

<http://www.ecigroup.us/Contact>



eciInsider

Experience. Commitment. Integrity.

124 West Church Street Dillsburg, PA 17019

(717) 638-2000

ecigroup.us