

eci Insider

A PRODUCTION OF ECIGROUP

APRIL 29, 2022



Experience. Commitment. Integrity.

eciGroup

DAUPHIN COUNTY TECHNICAL SCHOOL JOB FAIR

Scott Eichelberger and Brad Weigle visited Dauphin County Technical School to speak with students at Dauphin Technical's Spring 2022 Job Fair. eciConstruction is always searching for the next generation of construction professionals!



eciConstruction

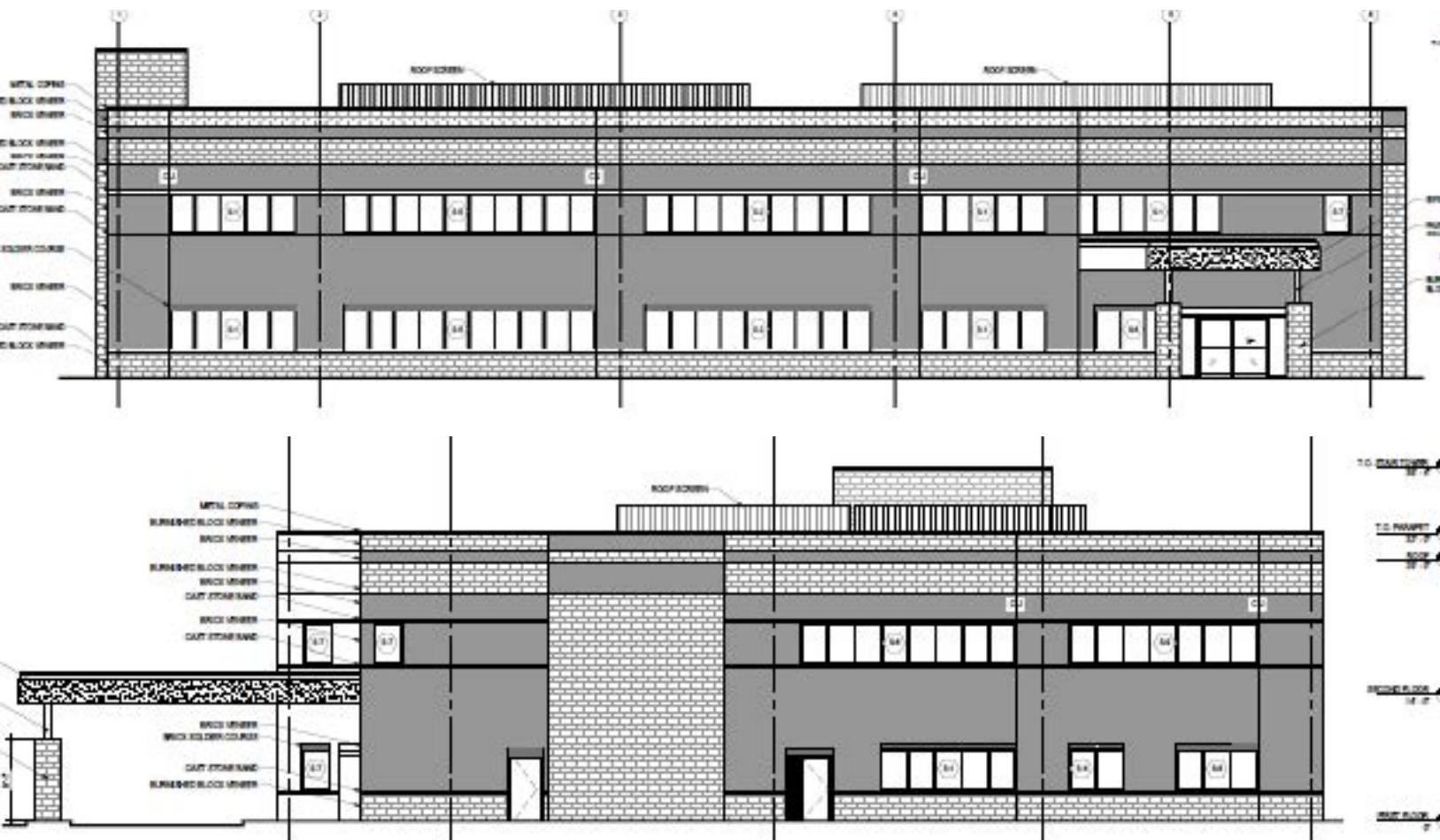
FUTURE CONSTRUCTION PROFESSIONALS SCHOLARSHIP

Mark Yinger, Scott Eichelberger, and Dustin Avery presented Christopher Boone with eciConstruction's first annual Future Construction Professionals Scholarship Award. Christopher received \$1000 and will be working with eciGroup this summer. With this scholarship, we are proud to invest in the future of the construction industry.



KEYSTONE HEALTH

This week eciConstruction was awarded the bid for the \$8,989,000 Keystone Health office building. The new design-build project will soon be located at 100 Chambers Hill Drive, Chambersburg, Pennsylvania.



eciConstruction

LOYALSOCK PRECONSTRUCTION

Dan Shaffer is the project manager and Gabe Newman is the superintendent on this \$8.04 Million, 40,000 square foot eciConstruction project for Loyalsock Middle and High School in Williamsport, Pennsylvania.

Dustin Avery, Chris Hinton, Brandon Stum and Justin Wenger worked on the bid for this addition and renovation project. The job includes a new gymnasium addition with classroom and restroom spaces, a cafeteria expansion with three new classrooms and a complete renovation of the existing kitchen, servery area and cafeteria restrooms.



eciConstruction

RF FAGER DISTRIBUTION CENTER : PROGRESS PICTURES





eciService

MEMBERS 1ST CANOPY UPDATE

An individual driving a u-haul attempted to drive around the end of a canopy at the Walnut Bottom Members 1st Federal Credit Union in Carlisle. Unfortunately, the driver misjudged their vehicle's height, distance, and speed, resulting in the end of the canopy being moved several inches. After the incident, a structural engineer discovered that the impact broke the weld at the top of the steel column, bent the steel I-beam, cracked the brick around the two outer columns and broke the concrete where the columns anchored to the island. The necessary repairs required structural shoring from Brand Safeway. The brick around the columns was then demolished, including the two end columns and concrete island. Then new columns, island concrete, and brick was installed.

To prevent any future incidents, Members 1st asked eciService to disassemble half of the canopy-roof since it is not needed for their ATM lane anymore. This requires the steel I-beams, roof section, and move gable end to meet in a new location, which will shorten the canopy by approximately 6 feet. All of the repairs and finish work on this project was done by eciService. Mark Shoemaker from eciConstruction assisted with the concrete replacement. The masonry brick around the steel columns was done by a sub-contractor.



Like **eci** On Facebook



Like eci on Facebook for the latest news & updates

 **eci**Group

<https://www.facebook.com/eciGroupDillsburg>

 **eci**Construction

<https://www.facebook.com/eciConstruction>

 **eci**Service

<https://www.facebook.com/eciService>

 **eci**Wireless

<https://www.facebook.com/eciWireless>

 **MidState**

<https://www.facebook.com/MidStateME>

“

It is not fair to ask of others what you are not willing to do yourself.

”

- Eleanor Roosevelt

SUGGESTIONS

Remember, eciGroup is always looking for ways to improve! You can head out to our website and submit your comments or suggestions in the form at:

<http://www.ecigroup.us/Contact>



eciInsider

Experience. Commitment. Integrity.

124 West Church Street Dillsburg, PA 17019

(717) 638-2000

ecigroup.us